

GENUINE SUPPORT

# THE BEST OEM REMAN WARRANTY COVERAGE IN THE INDUSTRY

**Komatsu Genuine Reman**  
commitment to quality – matches  
original equipment specifications,  
quality and performance.



## Komatsu Genuine Reman Warranty Coverage (Standard)

Applies to Genuine Reman Components:

**1 year • Unlimited hours**

## Komatsu Genuine Reman Component Quality Assurance

**4 years • 10,000 hours**

*Complete Engines/Transmissions/Torque Flows/Final Drives/  
Differentials/Axel Assemblies/Travel Motors/Main Hydraulic Pumps*

See your Komatsu Distributor for more information  
on this industry-leading Reman coverage today!



Contact your Product Support Rep Today

[www.kirby-smith.com](http://www.kirby-smith.com) | 888-861-0219

[sales@kirby-smith.com](mailto:sales@kirby-smith.com)

# KOMATSU®

## GENUINESUPPORT REMAN ASSURANCE

**Komatsu Genuine Parts** The Difference Matters™

## KOMATSU GENUINE REMAN COMPONENT QUALITY ASSURANCE

*Behind every Komatsu remanufactured product is a global team of Komatsu remanufacturing, design and salvage engineers dedicated to building high-quality, high-performance and competitively priced remanufactured components. Komatsu's unique global engineering specifications will provide like-new performance for your Komatsu machine.*

### WHAT KOMATSU GENUINE REMAN PRODUCTS QUALIFY?

All Komatsu Genuine Reman major components qualify for the Reman Component Quality Assurance:

- Complete Engines (excluding HD1500 & WA1200)
- Transmissions
- Torque Flows
- Final Drives
- Differentials
- Axle Assemblies
- Travel Motors
- Main Hydraulic Pumps

### WHAT KOMATSU GENUINE REMAN MACHINES QUALIFY?

- D21-D575
- PC130-PC2000
- GD555-GD825
- HM300-HM400
- HD325-HD1500
- WA200-WA1200

### COVERAGE

Prorated replacement credit after standard warranty expiration and up to 10,000 hours or 4 years.

### NO REGISTRATION REQUIRED

All purchase information and coverage terms are kept on record by your Komatsu distributor.

### REQUIREMENTS

A Komatsu Distributor must install the major component and perform a Komatsu-recommended PM Clinic every 2,500 hours or annually, whichever occurs first. Clinics are customer-paid. Additional requirements may exist. Please contact your local Komatsu distributor for more details.

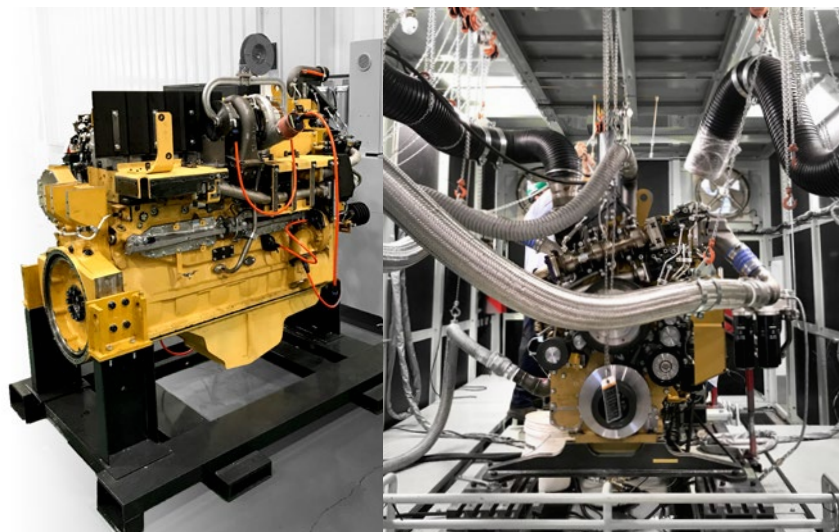
Scan the QR code below to learn more about the benefits of Komatsu Genuine Reman.



[www.kirby-smith.com](http://www.kirby-smith.com) | 888-861-0219

[sales@kirby-smith.com](mailto:sales@kirby-smith.com)

Oklahoma City | Tulsa | Dallas | Fort Worth | Abilene  
Lubbock | Amarillo | Odessa



*Komatsu Reman facility in Chattanooga, TN now open.*

**All Komatsu Genuine parts carry 12 month/unlimited hour parts warranty.**

**Contact your Komatsu Distributor for more information.**

Note: All comparisons and claims of improved performance made herein are made with respect to the prior Komatsu model unless otherwise specifically stated.

Komatsu America Corp. is an authorized licensee of Komatsu Ltd. Materials and specifications are subject to change without notice. KOMATSU®, Komatsu Care® and KOMTRAX® are registered trademarks of Komatsu Ltd. All other trademarks and service marks used herein are the property of Komatsu Ltd., Komatsu America Corp. or their respective owners or licensees.

# KOMATSU®

## GENUINESUPPORT REMAN ASSURANCE