

KANSAS CITY EQUIPMENT GUIDE

KIRBY-SMITH
MACHINERY, INC.

*YOUR HEAVY EQUIPMENT &
CRANE AUTHORITY*



YOUR SOURCE FOR PARTS & CRANE SUPPORT

IN-STOCK PARTS

We stock thousands of OEM and aftermarket parts and attachments. Including:

Filters • Hoses • Buckets • Teeth • Hydraulic Pumps • Undercarriage • Ground Engaging Tools • Wire Rope • Blades • Pins • Quick Couplers • Shears • Augers



CRANE PROGRAMS

Scheduled service and annual OSHA/ANSI-certified inspections.

Visual and oil sample analysis

Technical inspections

Preventative maintenance programs

Modernization & rebuild options

CRANE RAPID RESPONSE

24/7 Service

Emergency parts and service

Fully equipped field trucks

Factory-trained crane technicians

Crane Down Assistance

Toll-Free: 888-839-2410



NOT ALL MAKES AVAILABLE AT ALL LOCATIONS

LBX
Laws-Exotic Excavator Company

TAKEUCHI

Manitowoc

GROVE

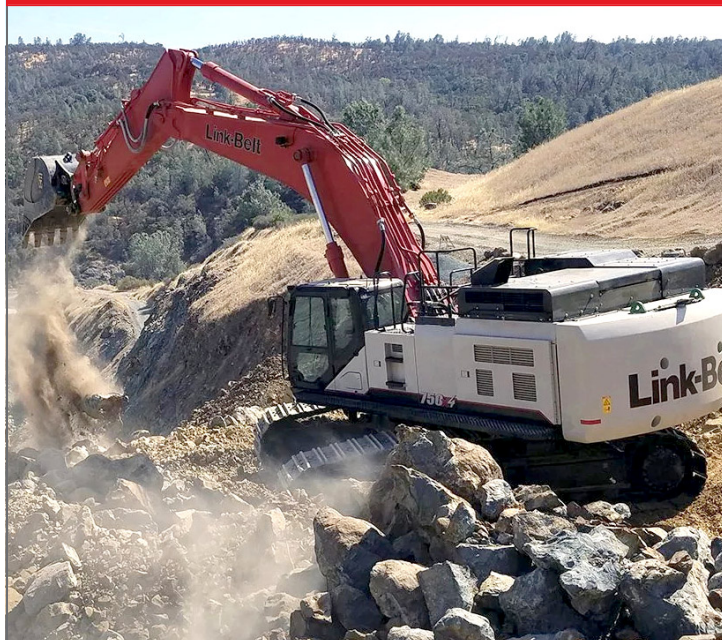
**NATIONAL
CRANE**

TERRAMAC

KIRBY-SMITH
MACHINERY, INC.

Excavators

X4 Excavators



Model	Operating Weight	Dig Depth
130 X4	.29,100 lbs.	.18' 2"
160 X4	.38,400 lbs.	.19' 11"
210 X4	.48,900 lbs.	.21' 10"
210 X4 LF	.51,900 lbs.	.39' 5"
250 X4	.56,900 lbs.	.22' 8"
250 X4 LF	.63,600 lbs.	.47' 9"
300 X4	.67,000 lbs.	.23' 4"
350 X4	.82,400 lbs.	.24' 1"
350 X4 LF	.88,200 lbs.	.46' 3"
490 X4	.112,900 lbs.	.24' 10"
750 X4	.158,300 lbs.	.27' 7"

X4S Excavators



Model	Operating Weight	Dig Depth
145 X4S	.33,900 lbs.	.18' 1"
170 X4S	.39,500 lbs.	.19' 10"
190 X4S	.42,100 lbs.	.19' 10"
220 X4S	.49,200 lbs.	.21' 10"
260 X4S	.57,300 lbs.	.22' 8"
300 X4S	.67,700 lbs.	.23' 4"
355 X4S	.78,600 lbs.	.22' 10"
370 X4S	.84,776 lbs.	.24' 2"

Spin Ace Excavators



Model	Operating Weight	Dig Depth
75 X3 SA	.17,400 lbs.	.13' 7"
80 X3 SA	.18,900 lbs.	.13' 9"
145 X4 SA	.33,600 lbs.	.19' 9"
245 X4 SA	.56,900 lbs.	.21' 10"

Material Handlers



Model	Operating Weight	Net Horsepower
250 X4 MH	.75,000 lbs.	.177 HP
250 X4 SL	.73,200 lbs.	.177 HP
380 X4 MH	.103,617 lbs.	.268 HP
600 X4 MH	.126,216 lbs.	.362 HP

Construction Equipment

TAKEUCHI

Excavators

Model	Operating Weight	Dig Depth
TB216	3,900 lb.	7' 10"
TB216H	4,277 lb.	7' 10"
TB225	4,993 lb.	8' 5.5"
TB230	6,360 lb.	9' 3.6"
TB235-2	7,418 lb.	10' 7.8"
TB240	8,570 lb.	11' 4.4"
TB250-2	11,288 lb.	12' 4.8"
TB257FR	12,930 lb.	12' 9.4"
TB260	12,645 lb.	12' 9.4"
TB335R	8,310 lb.	10' 6.2"
TB370	14,850 lb.	13' 4.7"
TB290	18,630 lb.	15' 0"
TB280FR	18,810 lb.	14' 11"
TB2150	34,646 lb.	18' 0"



4WD Compact Wheel Loaders



Model	Horsepower	Operating Weight	Rated Operating Capacity
TW60 Series 2	.61.2 HP	10,692 lb.	2,953 lb.
TW80 Series 3	.73 HP	12,700 lb.	4,301 lb.
TW95	.114 HP	18,188 lb.	6,326 lb.

Track Loaders



Model	Horsepower	Rated Operating Capacity
TL6R	.65.2 HP	1,841 lb. ROC
TL8R2	.74.3 HP	2,116 lb. ROC
TL10V2	.74.3 HP	2,522 lb. ROC
TL11R3	.107.3 HP	2,735 lb. ROC
TL12R2	.111.3 HP	2,975 lb. ROC
TL12V2	.111.3 HP	4,107 lb. ROC

Cranes



Lattice Boom Crawler Cranes



Capacity	Main Boom	Luffing Jib Length
80 USt - 2,535 USt	200'-479'	170'-374'

Cranes



Boom Trucks



Model	Capacity	Max Tip Height
Stand Up	10-33 USt	up to 165'
Swing Seat	30-60 USt	up to 204'



Truck Mounted Cranes



Model	Capacity	Max Tip Height
Truck Mounted	40-115 USt	up to 263.4'



Carry Deck and RT Cranes



Capacity	Max Tip Height
2.5 - 25 USt	up to 99'



Telescopic Cranes



Model	Capacity	Max Tip Height
Crawler	30-140 USt	up to 229'8"



Model	Capacity	Max Tip Height
All Terrain	55-550 USt	up to 448'



Model	Capacity	Max Tip Height
Rough Terrain	55-550 USt	up to 448'

Road Construction

Motor Graders/Scrapers



Model	Horsepower	Operating Weight
685D	130 HP	16,000 lb.
695B	130 HP	16,000 lb.

Road Widener



Model	Horsepower	Weight	Wheelbase
4130B	130 HP	28,000 lb.	9' 9"

Large Asphalt Distributors



Model	Tank Size	Spray Bar Length
Maximizer 2B	1,050 to 5,313 Gal.	12 ft.
Maximizer 3B	1,050 to 5,313 Gal.	16 ft.
Maximizer 4B	2,050 to 5,313 Gal.	24 ft.

Pavers



Model	Horsepower	Paving Width
1000G	49 HP	Up to 13'
5300B	64.4 HP	Up to 7'
6150	74 HP	Up to 15'
7000C	64 HP	Up to 13'
8500E	71 HP	Up to 15'
8510E	74 HP	Up to 15'
8515E	74 HP	Up to 15'
8520C	125 HP	Up to 15'6"
8530	125 HP	Up to 15'6"
8616D	127 HP	Up to 15'6"

Force Feed Loaders



Model	Horsepower	Belt Width
3000C Force Feed Loader	130 HP	2' 6"

Spray Patchers



Model	Horsepower	Emulsion	Weight
RA-400	74 HP	300 Gal.	18,000 w/ standard chassis

Road Construction



Tack Distributor



Model	Horsepower	Gallon Capacity
L150	4.8 HP	150 gal.
L300	4.8 HP	300 gal.
L600	4.8 HP	600 gal.

Hot Boxes



HB4T

Hopper Size	4 ton
Heat System	105,000 BTU Burner
Weight	5,000 lb.

Water Trucks

Water Trucks



Capacity

2,000 Gallon • 3,000 Gallon • 4,000 Gallon
 8,000 Gallon Off Road • 2,000 Gallon Water Tower

Material Handlers



Material Handlers



Model	Operating Weight	Horsepower	Max Range
200 MH	44,092-47,399 lbs.	140 HP	33' 1"
270 MH	59,525 lbs.	172 HP	53' 8"
300 MH	68,446 lbs.	172 HP	53' 8"
350 MH	73,414-83,776 lbs.	240 HP	18.2 M
400 MH	90,389 lbs.	226 HP	59' 3"
520 MH	116,845-125,663 lbs.	308 HP	71' 10"



Material Handlers



Model	Operating Weight	Horsepower	Max Range
60	143,000-176,000 lb.	286 HP	68"
70	165,000-210,000 lb.	312-360 HP	79"
90	198,000-242,000 lb.	312-360 HP	85"
95	205,000-255,000 lb.	390-512 HP	89"
120	245,000-310,000 lb.	390-512 HP	92'
140	330,000-420,000 lb.	340-550 HP	98"
160	350,000-440,000 lb.	492-700 HP	105"
200	510,000-620,000 lb.	530-700 HP	125"
300	705,000-840,000 lb.	530-700 HP	131"

Construction Equipment



Rubber Track Carrier Units



Model	Horsepower	Carrying Capacity	Machine Weight
RT6	.155 HP	.12,000 lb.	.17,880 lb.
RT7R	.165 HP	.14,000 lb.	.23,730 lb.
RT9	.225 HP	.18,000 lb.	.26,180 lb.
RT14	.310 HP	.28,000 lb.	.34,260 lb.
RT14R	.320 HP	.28,000 lb.	.42,200 lb.

Conveyors / Feeders



Conveying and Material Handling



Telescoping Conveyors • Transfer Conveyors
Radial Stackers • Stationary Conveyor
Bins, Hoppers, Feeders • Custom Conveyors

Dust Suppression Cannons



HKD BLUE Mistars



Model	Throw	Misting Coverage
Small Mistars	.25-150 ft	.300-71,680 ft ²
400 Series	.250+ ft	.146,250 ft ²
500 Series	.300+ ft	.177,000 ft ²

Lifts



JLG Telehandlers



Model	Capacity	Horizontal Reach
G5-18A	.5,500 lb.	.18' 4"
742	.7,000 lb.	.42'
943	.9,000 lb.	.43'
1043	.10,000 lb.	.43'
1055	.10,000 lb.	.55'
1075	.10,000 lb.	.75'
1255	.12,000 lb.	.55'
1644 High Capacity	.15,650 lb.	.43'7"
1732 High Capacity	.16,755 lb.	.31'8"
2733 High Capacity	.26,600 lb.	.33'1"

Compressors



Sullair Air Compressors



Model	CFM	PSIG
185 Series	.185	.100
375 Series	.375	.100-200
1600 series	.1600	.80-100

Vacuums



Vacall Vacuum



Type	Water Tank Capacity
Catch Basin	.300-420 gal.
P Series Combination	.1,000-1,500 gal.
R Series Combination	.1,000-1,500 gal.
AE2 Hydro/Air Excavators	.1,100- 1,300 gal.
Industrial Vacuum Loaders	.1,300 gal.
Truck Mounted Jetters	.1,600 gal.

Pumps



Thompson Pump



34-10,500 GPM

Sweepers



Global Sweepers



Model	Horsepower	Water Tank Capacity
R3AIR	.172 HP	.230 gal.
R4 AIR	.280 HP	.230 gal.
V6AIR	.74 HP	.500 gal.
M3	.115 HP	.220 gal.
M4	.280 HP	.250 gal.
M4HSD	.280 HP	.280 gal.
M4 Hybrid	.200 HP	.250 gal.

Attachments



Takeuchi



Buckets, Couplers, Thumbs, Grapples, Forks, Mulchers, Brush Cutters, Snow Removal, Brooms

Attachments



Indeco



Small135 - 1,220 lbs
 Medium1,440 - 4,200 lbs
 Large5,000 - 24,400 lbs

Attachments



Virnig



Rotary Brusher Cutters, Grapples, Pick-up Brooms, Auger Drives, Auger Bits, Tree Disc Mulchers



ESCO



HDP Bucket, XDP Bucket, Ultralok Tooth Systems



Werk Brau



Manual Couplers, Hydraulic Couplers, Thumbs, Smooth / Tooth Buckets



Fecon



Bull Hog-Excavator, Hydraulic & Skid Steers, Grapple, Tree Shears

KIRBY-SMITH
MACHINERY, INC.

For over 35 years, Kirby-Smith
Machinery has helped
contractors keep projects on track
with fast, reliable support

PARTS & SERVICE

KANSAS CITY, KS



FULL SERVICE. ANYWHERE YOU NEED IT.

SHOP SERVICE

Complete rebuilds, hydraulic repairs, and undercarriage replacements done by certified technicians.


FIELD SERVICE

24/7 Service

Fully equipped service trucks and portable diagnostic tools bring repairs right to your jobsite.

PREVENTATIVE MAINTNENCE

Extend equipment life and minimize downtime with regular inspections and oil analysis. Available for **all makes and models**, supported by certified service and OEM-approved fluids.

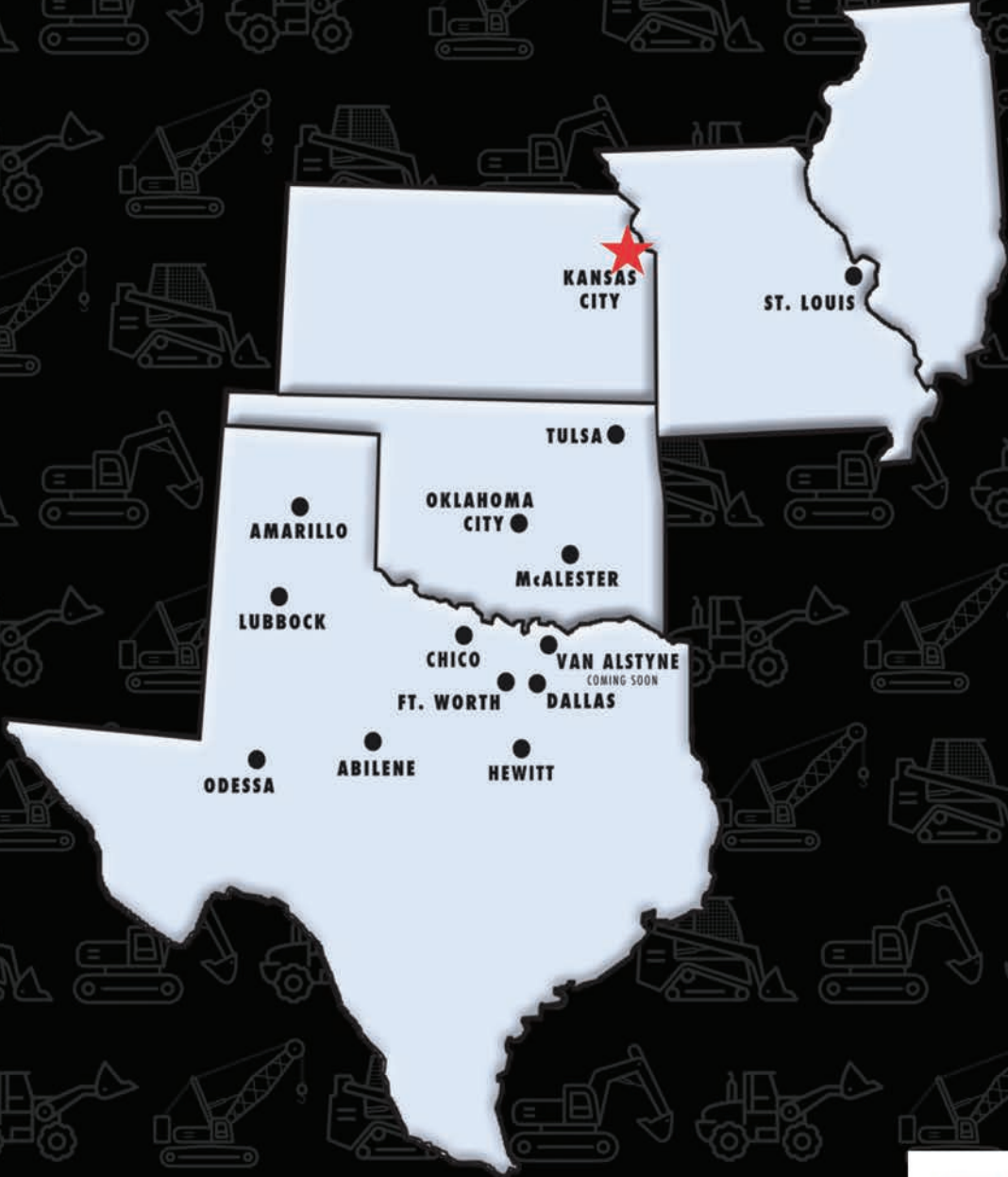
 Available 24/7 for field
and crane service

 **888.384.9402**  **KIRBY-SMITH.COM**
 **8320 RUBY AVENUE, KANSAS CITY, KS 66111**

Kirby-Smith.com

8320 RUBY AVENUE, KANSAS CITY, KS 66111

☎ 888.384.9402



KIRBY-SMITH
MACHINERY, INC.®

SALES · RENTALS · PARTS · SERVICE

Committed to Customer Service Since 1983



Scan To Find All
Branches!